



America's Favorite Garage Doors®

IMAGINATION

LEADS TO *IMPACT*



2021 LOOKBOOK



# ORGANIC FUSION



WATKINS HOBBY BARN MELDS STYLE, FUNCTION AND PURE ENJOYMENT.

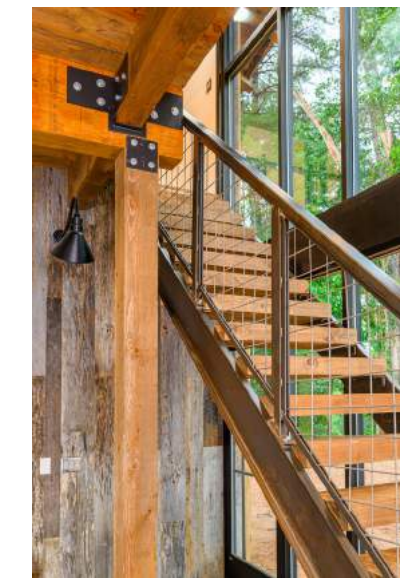




Constructed to house 12 cars, motorcycles and miscellaneous off-road vehicles, the workshop contains pneumatic air hoses and floating stainless steel cabinets. A loft was designed to accommodate a separate office or home gym, and a bathroom was created from a tin roof.

Near Asheville, North Carolina, Watkins Hobby Barn isn't just a dream workshop. It also serves as an office and superlative entertaining space, all the while showcasing the glorious Blue Ridge Mountains, thanks

to Clopay's Avante® glass garage doors. With their clear, insulated glass, the doors create a large expanse of natural light, provide functional accessibility and add the definitive touch to mixed materials and textures.





VISION  
COMES



TO

*FRUITION*

**With mixed materials,** clean horizontal lines and sleek windows with mid-century appeal, doors such as Clopay's Canyon Ridge® Modern and Modern Steel™ add a defining element to a home's exterior. Skillful use of positive and negative space dramatically enhances the curb appeal of even the simplest home and plays to strong consumer preference for modern design.





# THE TEST OF *TIMELESS*



**The perfect complement to Craftsman styling,** our Gallery® Steel garage doors provide a vintage feel thanks to a grooved panel design, decorative hardware and Clopay's exclusive Ultra-Grain® wood-look finish. Designed specifically for steel doors, Ultra-Grain comes in Medium Oak, Dark Oak, Walnut and Slate to match stained wood accents elsewhere on the exterior. This durable, low-maintenance finish carries a limited lifetime warranty. Available with or without insulation, Gallery Steel doors also offer the option of windows.





# BRIDGING THE PAST + *FUTURE*



Amid historical homes in Hancock Park, Los Angeles, the rectilinear Bridge House is a model of modern structural engineering. Stretching 210 feet, it straddles a natural brook in an architectural maneuver that gives the project its name.



Rows of glass windows and doors blur the line between indoors and out-of-doors, enabling residents to feel connected with nature. With its clean lines and broad expanses of glass, Clopay's Avante® door with frosted glass perfectly matches the home's aesthetic.

“

*The design drew inspiration from the very unusual site condition, and I wanted to fully immerse the building into the landscape.*

”

**Dan Brunn**  
AIA, Principal of Dan Brunn Architecture



# INTEGRITY *THRIVES*



One of the early influencers who shared her homebuilding journey, Noell Jett and her husband remarkably built most of their St. Augustine, Florida, farmhouse themselves. With highly visible, different-height doors needed for cars and recreational vehicles,

Clopay achieved beautiful consistency with Canyon Ridge® Carriage House doors. The Clopay Clear Cypress wood-look composite cladding was the perfect solution since the couple wanted the look of real wood, which wasn't practical in Florida.



“ *My grandmother lived in an old Victorian-style home with a detached carriage house. I always loved how beautiful it was and wanted to re-create the look of carriage doors on my home!* ”

Noell Jett – @Jettsetfarmhouse



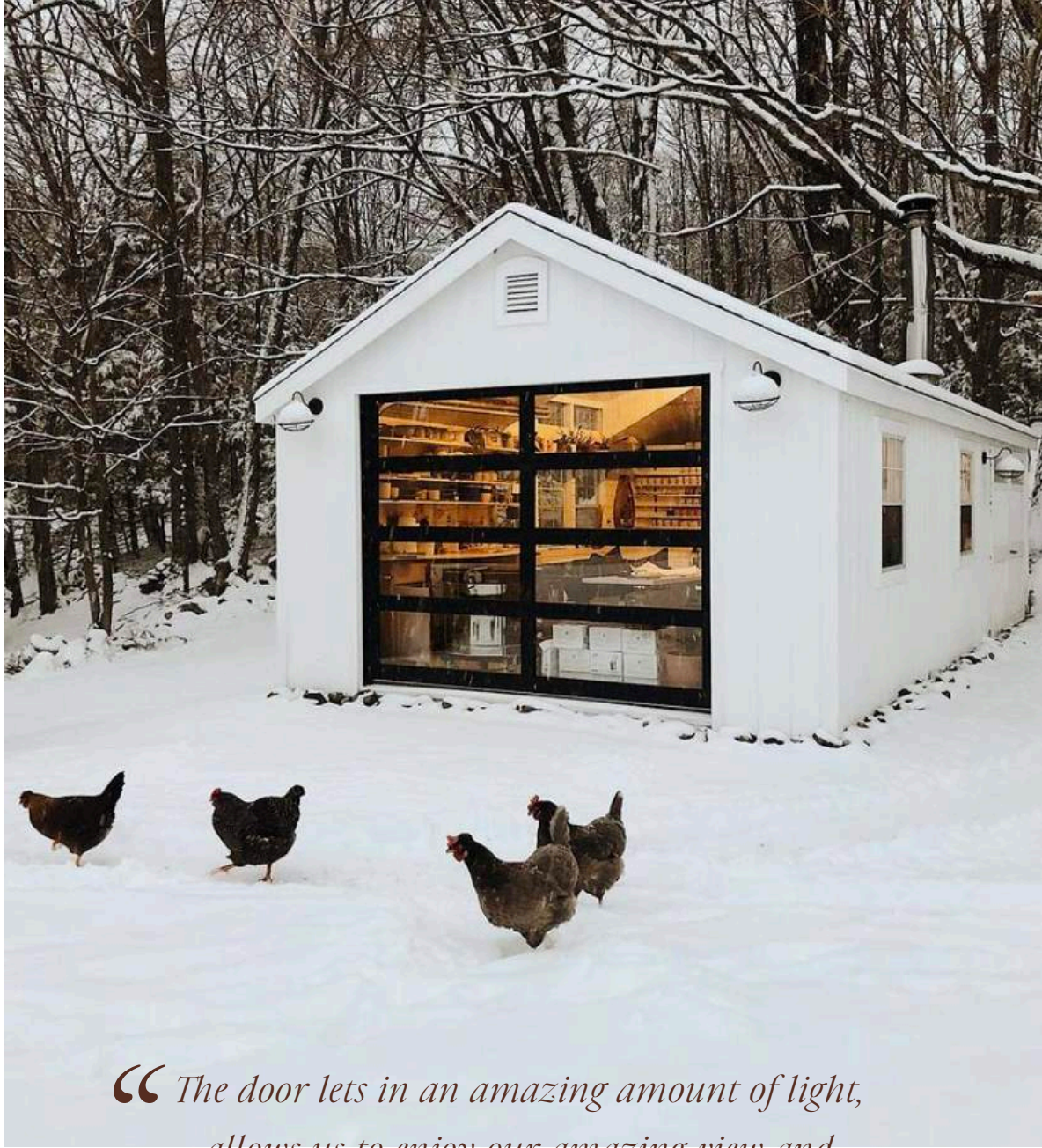
# SWEET *SUGAR* *HOUSE*

---

**When Sugarhouse Ceramic Co.** artists Natasha and Brett purchased a Vermont homestead, their studio was the first building they put on their land. “It was an empty shell when we got it, bare stud wall interiors, no insulation, plywood floors and the ugliest metal brown garage door you ever saw.”

Total transformation came with the installation of Clopay’s Avante® glass garage door. Its clear, insulated glass floods the space with natural light and lets the artists take in the beauty of the natural landscape while working by the warmth of a wood-burning fire. In the summer, they can open the door to let fresh air in.





“ The door lets in an amazing amount of light, allows us to enjoy our amazing view and totally ups our aesthetic game in the studio! ”

Natasha – Sugarhouse Ceramic Co.







# A FAMILY *AFFAIR*

**The only garage door manufacturer** to offer complementing garage and entry doors, Clopay put the finishing touch on a transitional Iowa farmhouse. Whereas original plans called for black doors, the homeowner felt Clopay's Ultra-Grain® Slate lent a more rustic, reclaimed wood look consistent with the home's architecture. The door's polyurethane foam insulation helps keep the house comfortable during frigid Iowa winters.





# COHESION *FLOWS*



“ We love the way we can bring so much light into the garage or workshop and give a glow to the exterior when garage lights are on with a low-maintenance glass and metal door. ”

Mark Larson, AIA



**Integral to a stunning rural retreat**, Clopay's Modern Steel™ door is the perfect choice for both the garage and the workshop, in a smaller size. Intellicore® polyurethane insulated steel panels and tempered insulated glass are every bit equal to Wisconsin winters.



**Influencer Kirstie Kay's home in Tyler, Texas,** perfectly demonstrates how much of a home's frontage can be occupied by its garage door. While a modern or even a rustic carriage house door would have been an obvious selection for this home, Kay made an unexpected choice: Clopay's Canyon Ridge® Louver door, which plays off the front door's horizontal lines and perfectly bridges mixed architectural styles that come together in this modern farmhouse.



*A STRONG*  
STATEMENT





# MAKING HISTORY



When HGTV designer Anthony Carrino converted an 1890s fire station into his home, a Clopay® custom door was a must. Garage doors are the iconic face of every fire station, and since this structure is included on the National Register of Historic Places, the door absolutely had to reflect the period.

To meet that standard while standing up to Jersey City winters, we created a Reserve® series door using Extria, the first wood-alternative material the Historic Preservation Board has approved for use. Clopay Reserve doors can also be custom crafted from any number of natural woods.







*CHARMING*

# CHANDLER FARMHOUSE



**Staying true to the feeling** of a century-old family farm guided every decision in designing Chandler Farmhouse in northern Ohio. With their grooved panels, dark Ultra-Grain® faux woodgrain finish and optional decorative windows, Clopay® Gallery® Steel doors delivered exactly as desired.



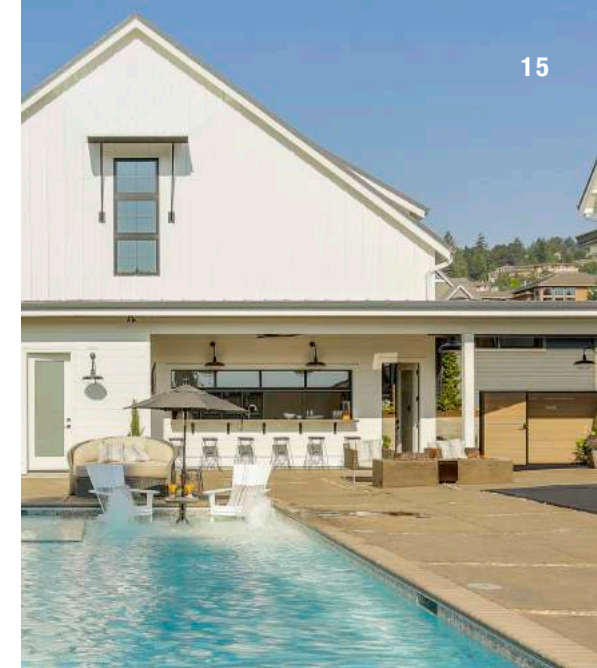
# POSSIBILITIES

THE GARAGE IS JUST THE BEGINNING.

# MULTIPLY



A modern Oregon farmhouse makes ingenious use of multiple Clopay® doors in a recreational outbuilding. For instance, utilizing a smaller customized Clopay Avante® door, a poolside roll-up window opens handily to a kitchen and bar area.



High-lift tracks go up the wall instead of overhead for a clean, open feel. Frosted glass provides privacy or clear glass admits natural light as desired.

In addition to the poolside kitchen/bar, the outbuilding doubles as a spacious gym, complete with an indoor basketball court.





# SIMPLY *PERFECT*



**The ever-popular,** recessed-panel Shaker styling defines Clopay's Bridgeport™ Steel doors. The traditional symmetry of stile and rail design combines with abundant color options, making Bridgeport the perfect choice for charming bungalows and modern homes alike. Three-layer insulated steel construction ensures exceptional strength and energy efficiency.





# DOORS THAT OPEN *NEW HORIZONS*



Lifestyle blogger **Michelle Janeen** has been sharing the transformation of her San Diego fixer-upper with her 141K Instagram followers since 2014. Step by step, she's revealed how cosmetic changes alone have helped this Spanish Colonial home live up to its spectacular location. Since the garage door is the first thing guests see, getting the right look was crucial. Clopay's Canyon Ridge® Carriage House door with faux-wood overlays and custom staining made all the difference.

“  
*Upgrading the garage door  
was the best decision I have  
made on this house.*

”  
**Michelle Janeen – Lifestyle Blogger**



# MODERN *MAKE OVER*



When E2 Homes undertook the 2021 edition of The New American Remodel®, the challenge of reimagining a 1973 mid-century modern lakefront home was considerable to say the least. Though the home draws its architectural lineage from Frank Lloyd Wright, its original façade with five discrete half-levels, vertical board siding and

protruding balconies had become badly outdated. E2 dramatically transformed the home with a modern façade defined by clean horizontal lines, contrasting textures and large glass doors that offer views to Lake Sue in northeastern Orlando. A standout feature of the home's new curb appeal is Clopay's Canyon Ridge® garage doors in Slate

Ultra-Grain® finish with aluminum metal inlays. The low-maintenance faux-wood composite doors have a two-inch-thick polyurethane-insulated steel core with an 18.4 R-value, delivering on the energy efficiency E2 required for sustainable design. The doors also provide Clopay's WINDCODE® reinforcement for protection during storms.



# BRILLIANT IDEAS



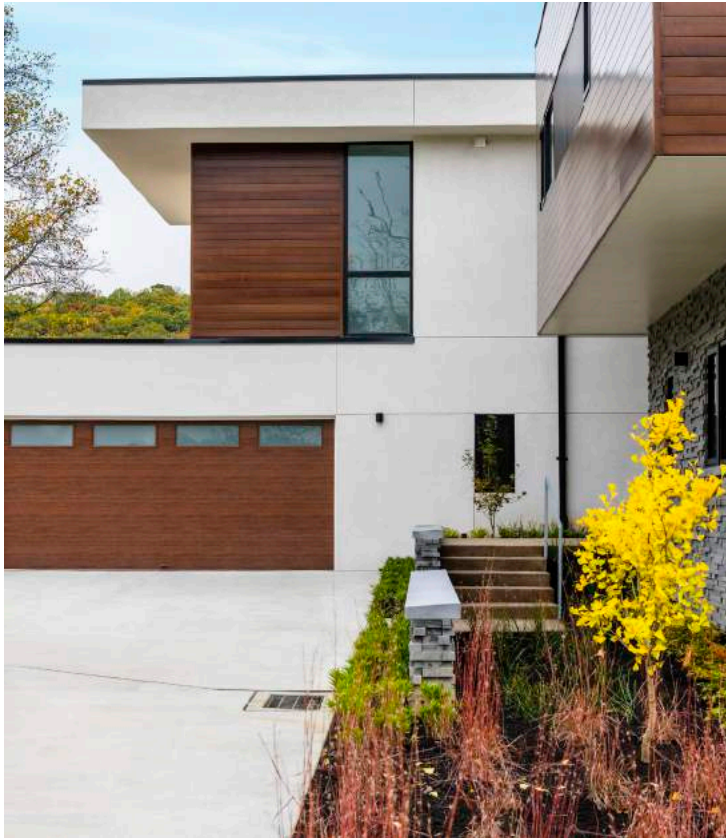
**Exquisite architectural detail** and a perfect color scheme make it appear the 2019 Southern Living Idea House has long been a part of Amelia Island, Florida. This “new, old house,” however, has all the modern amenities. Among them are Clopay® Canyon Ridge® Carriage House style doors for both the garage and golf cart bay, all operated by an automatic door opener and built with WINDCODE® reinforcement to meet the demands of the coastal environment.

To cohere with the architect’s vision, finishing the old-fashioned wood-look doors with the perfect color was essential. Fortunately, Clopay’s Color Blast® finish program offers hundreds of Sherwin-Williams® color options or even the option of mixing custom colors.

**Southern Living**  
custom builder program  
OFFICIAL SPONSOR



Seeing the architect's vision through to completion in Murrysville, Pennsylvania, Clopay's Modern Steel™ doors are right at home among planes of stained cedar siding, stucco surfaces and walls of textured concrete veneer stone.



*A FRESH*  
PERSPECTIVE



# PRODUCT INDEX



COVER

FEATURED: **Canyon Ridge® Modern** insulated garage door, Mahogany faux-wood composite cladding, Medium finish, insulated frosted glass windows

Photo credit: Studio 512.

Project by: Coat Remodel



02

FEATURED: **Avante®** Black aluminum frame with clear insulated glass

Project by: Living Stone Design + Build



04

FEATURED: **Canyon Ridge Modern** insulated garage door, Mahogany faux-wood composite cladding in Walnut finish, insulated frosted glass windows

Architect/Builder: Legacy Custom Built Homes and Hyatt Design

Photo credit: Jeffrey A. Davis Photography



04

FEATURED: **Modern Steel™** insulated garage doors in Black with square, insulated frosted glass windows



04

FEATURED: **Modern Steel** full view in Black with insulated glass windows



04

FEATURED: **Modern Steel** insulated garage doors in Walnut Ultra-Grain® finish, Contemporary Slim windows, insulated frosted glass with Black aluminum frames

Photo credit: Andy Frame



05

FEATURED: **Gallery® Steel** insulated steel door, long panel design with REC13 windows in Dark Oak Ultra-Grain® finish

Builder: Gordon Tobey Developments



06

FEATURED: **Avante** Black aluminum frame with insulated frosted glass panels

Builder: MODAA Construction

Architect: Dan Brunn Architecture

Photo credit: Brandon Shigeta and Dan Brunn, AIA



07

FEATURED: **Canyon Ridge Carriage House** Garage Doors (5-Layer), Medium stain Clear Cypress composite cladding and overlays with REC13 insulated windows and built-in WindCode® reinforcement.

Photo credit: @visiblestyle for @jettsetfarmhouse



08

FEATURED: **Avante** Black frame with clear insulated glass

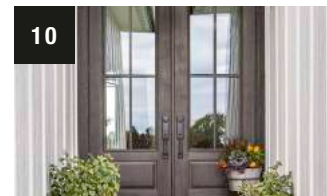
Photo credit: @sugarhouseceramico



10

FEATURED: **Canyon Ridge Carriage House** (4-Layer) garage door, Intellicore® polyurethane insulated steel with composite overlays in Slate Ultra-Grain finish

Photo credit: Andy Frame



10

FEATURED: **Rustic** fiberglass entry and side doors with custom SDLs and transom in Slate finish

Photo credit: Andy Frame



# PRODUCT INDEX

(continued)



FEATURED: **Modern Steel™** full view in Black with insulated frosted glass windows

Project by: Rehkamp Larson Architects

Photo credit: Scott Amundson Photography



FEATURED: **Bridgeport™ Steel** insulated door, narrow panel design with plain long windows, painted White



FEATURED: **Canyon Ridge® Louver** door, Design 52 with SQ23 windows, Mahogany faux-wood composite cladding, Black paint finish, Intellicore® insulation

Photo credit: @kirstiekay



FEATURED: **Canyon Ridge Carriage House (5-Layer)** insulated garage door, Design 13, REC14 windows, Clear Cypress faux-wood composite cladding and overlays, custom stain

Photo credit: Lauren Armellini Pillich @pixelsandpigment



FEATURED: **Reserve® Wood Custom** insulated carriage house door with Extira overlays, custom paint finish

Photo credit: Anthony Carrino



FEATURED: **Canyon Ridge Modern** insulated garage doors with aluminum inlays, Slate finish, WindCode® reinforcement

Builder: E2 Homes

Photo credit: Jeffrey A. Davis Photography



FEATURED: **Gallery® Steel** insulated door, short panel with windows in Dark Oak Ultra-Grain® finish

Photo credit: Andy Frame



FEATURED: **Canyon Ridge Carriage House (5-Layer)** insulated garage doors, Design 11, REC14 windows, Clear Cypress faux-wood composite cladding and overlays, WindCode reinforcement. Custom paint color: SW Debonair.

Builder: Riverside Homes Custom

Architect: Historical Concepts

Photo credit: Laurey Glenn



FEATURED: **Avante®** Black aluminum frame with insulated clear or frosted glass panels and custom track design

Builder: Stone Bridge Homes NW



FEATURED: **Modern Steel** insulated garage doors in Walnut Ultra-Grain finish with frosted glass windows

Architect: Moss Architects

Photo credit: Anthony Musmanno





America's Favorite Garage Doors®

For more information, visit [www.clopaydoor.com](http://www.clopaydoor.com) or call 800-225-6729 | [Find your local Clopay dealer](#)